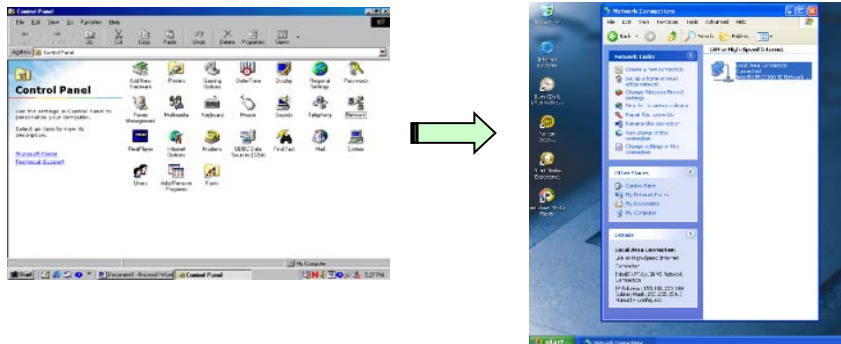


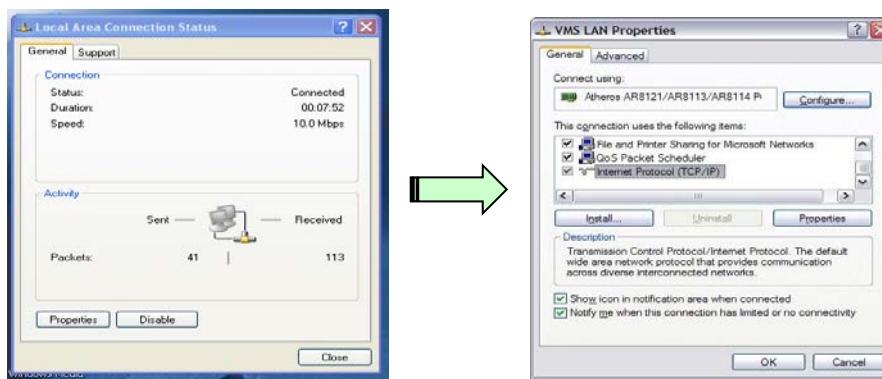
# Network Configuration in Student Rooms

## 1. Configure Your Network Setting – Windows XP / Windows 7

- 1.1 Connect the computer with LAN cable. Switch on your computer and select “Start”.
- 1.2 Select “Control Panel”, click “Network and Internet Connections”. (If you are using Window 2000 or earlier versions, select “Settings” then “Network Connections” and skip Step (1.3)).



- 1.3 In the “Network and Internet Connections” window, click the icon “Network Connections”.
- 1.4 In the “Network Connections” window, open the icon “Local Area Connection”.
- 1.5 In the “Local Area Connection Status” window, select the “General” tab, click the “Properties” button.
- 1.6 In the “Local Area Connection Properties” window, select the “General” tab. In the area under the label “This connection uses the following items:”, scroll down and select the item “Internet Protocol (TCP/IP)”, press the “Properties” button to open it.



1.7 In the “Internet Protocol (TCP/IP) Properties” window, select the “General” tab” :

- ✚ Choose “Obtain an IP address automatically”;
- ✚ Choose “Obtain DNS server address automatically”;
- ✚ Here is the illustration:



1.8 Press “OK” and “Close” buttons to complete the setup. Then “Exit”.

## 2. Login Page Setup (Internet Explorer)

2.1 Open the Internet browser.

2.2 In the “Dr. Ng Tor Tai International House” interface, enter your username and password accordingly:



2.2.1 Double Room:

**Username:**

- a. **For bed space C: Your room no.**
- b. **For bed space B: Your room no. + 50**  
\*Please refer to you room for bed space B / C

e.g. For room no. 115:

**115C → Username: 115**

**115B → Username: 115 + 50, i.e. 165**

**Password: Your HKBU Student ID Card no.**

e.g. If your HKBU Student ID Card no. is 12345678, enter 12345678 as password.

2.2.2 Single Room:

**Username: Your room no.**

e.g. For room no. 116: → Username : 116

**Password: Your HKBU Student ID Card no.**

e.g. If your HKBU Student ID Card no. is 12345678, enter 12345678 as password.

2.3 Click “Login”.

2.4 Network is connected. Please proceed.

For further assistance, please contact the reception at “0”.